



ELF Maths



Can you crack the code?

Each number matches a letter in the elfabet.

Find the answer to each question, to reveal the letters, then use the letters to spell their favourite word!

A	B	C	D	E	F	G	H	I	J	K	L	M
1	2	3	4	5	6	7	8	9	10	11	12	13
N	O	P	Q	R	S	T	U	V	W	X	Y	Z
14	15	16	17	18	19	20	21	22	23	24	25	26


$26 \div 2 =$  Letter =

$35 - 16 =$  Letter =

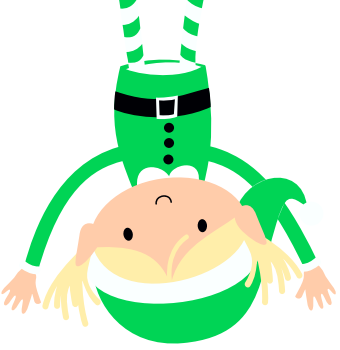
Half of 16 =  Letter =

$3 \times 3 =$  Letter =


$12 \div 4 =$  Letter =

$5 \times$  $= 25$ Letter =





$3 \times 2 =$  Letter =

Half of 18 =  Letter =

The word is...

SANTA

Santer



What's an elf's favourite type of music?

$18 + 5 =$  Letter =

$9 \times 2 =$  Letter =

$10 \div 10 =$  Letter =

$4 \times 4 =$  Letter =





ELF **ANSWERS** Maths



Can you crack the code?

Each number matches a letter in the elfabet.

Find the answer to each question, to reveal the letters,
then use the letters to spell their favourite word!

A	B	C	D	E	F	G	H	I	J	K	L	M
1	2	3	4	5	6	7	8	9	10	11	12	13
N	O	P	Q	R	S	T	U	V	W	X	Y	Z
14	15	16	17	18	19	20	21	22	23	24	25	26


$26 \div 2 =$  Letter = **M**

$35 - 16 =$  Letter = **S**

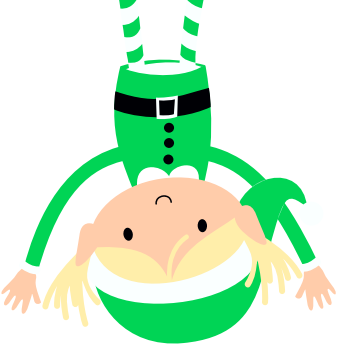
Half of 16 =  Letter = **H**

$3 \times 3 =$  Letter = **I**

$12 \div 4 =$  Letter = **C**


$5 \times$  $= 25$ Letter = **E**





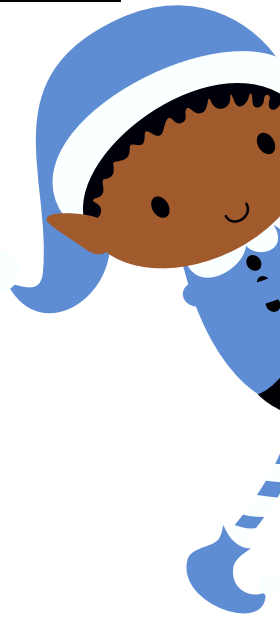
ANSWERS

$3 \times 2 =$  Letter =

Half of 18 =  Letter =

The word is... MISCHIEF! Elves
LOVE a bit of mischief!

SANTA *Banter*



What's an elf's favourite type of music?

$18 + 5 =$  Letter =

$9 \times 2 =$  Letter =

$10 \div 10 =$  Letter =

$4 \times 4 =$  Letter =

